

Woodwinds

FACULTY ARTISTS

Brad Balliett

Alexander Fiterstein

Phillip Kolker

Gary Louie

Jane Marvine

Erica Peel

Marina Piccinini

Nicholas Stovall



The Peabody Conservatory has a distinguished woodwind faculty which includes members of major orchestras

such as the Baltimore Symphony, Metropolitan Opera Orchestra, National Symphony Orchestra, New York Philharmonic, and Pittsburgh Symphony. They have been principal orchestra players, performed as soloists and chamber musicians to critical acclaim, collaborated with legendary performers and conductors, and been recorded on major labels. They have won prestigious awards and prizes including multiple recipients of the Avery Fisher Career Grant, and Solo Recitalist Grant from the National Endowment for the Arts. Peabody students go on to careers as recitalists and soloists and win positions in prestigious orchestras and ensembles all over the world.

peabody.jhu.edu/woodwinds





Audition Requirements

All students applying for entry into the fall 2021 semester must record all pieces in their entirety according to the repertoire requirements below. For further information on audition procedures for the coming year, please visit: peabody.jhu.edu/auditions.

BASSOON

- Two contrasting études from Weissenborn, Milde, or similar study books
- Two contrasting movements from a Baroque or classical sonata or concerto

CLARINET

- Mozart Concerto in A major, K. 622, slow movement
- One of the following:*
- Weber Concerto No 1 in F minor, 1st or 3rd movement
 - Weber Concerto No. 2 in E-flat major, 1st or 3rd movement
 - Mozart Concerto in A major, K. 622, 1st or 3rd movement
 - Weber Concertino, Op 26
 - May include any standard repertoire piece which best represents their performance level and technical proficiency

FLUTE

PRE-SCREENING (all degrees)

- Two contrasting movements from a sonata by J.S. Bach OR two contrasting movements from a concerto by Mozart (including cadenzas)
- A solo work (unaccompanied) of the candidate's choice
- A third contrasting work of the candidate's choice

LIVE AUDITION (BM, MM, GPD)

- A complete sonata by J. S. Bach or a complete concerto by Mozart (including cadenzas)
- A solo work (unaccompanied) of the candidate's choice
- A third contrasting work of the candidate's choice (typically, a sonata, a work for flute and piano, a concerto, or an unaccompanied work)
- 3 contrasting orchestral excerpts of the candidate's choice

OBOE

- A fast and slow Ferling étude or the equivalent
- One technical solo from the standard orchestral repertoire and one slow solo from a Bach cantata
- Any work from the standard solo literature

PICCOLO

- Vivaldi piccolo concerto in C Major RV443, 1st and 2nd movements
- A complete work for solo piccolo
- Orchestral piccolo solo excerpts from the following:
 - Rossini, *Semiramide*
 - Shostakovich, Symphony 6
 - Stravinsky, *Firebird*
- Mozart flute Concerto, 1st movement exposition

SAXOPHONE

Applicants should prepare two études of contrasting styles, two contrasting movements from a major sonata, and (optional) one movement of a standard concerto. As examples:

- Ferling *48 Etudes* and Mule *18 Exercises after Berbiguier*
- Creston Sonata, Eccles/Rascher Sonata, Heiden Sonata
- Glazounov Concerto, Ibert *Concertino da Camera*

GRADUATE

Graduate audition repertoire for woodwinds (other than flute) are patterned after a typical undergraduate senior recital. In order to provide some latitude, the requirements are not dictated. General guidelines are to prepare sufficient material to perform a full solo recital containing works which show a diversity of periods and styles. Graduate flute applicants may consider the undergraduate flute guidelines and are free to substitute pieces of their own choosing which best represent their performance level and musical taste.

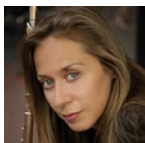
FACULTY ARTISTS



Brad Balliett,
bassoon



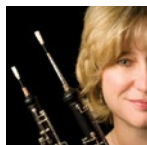
Gary Louie,
saxophone



Marina Piccinini,
flute



Alexander Fiterstein,
clarinet



Jane Marvine,
oboe



Nicholas Stovall,
oboe



Phillip Kolker,
bassoon



Erica Peel,
piccolo

Performance Opportunities

- Peabody Symphony and Chamber Orchestras
- Peabody Modern Orchestra, Now Hear This (Contemporary music ensembles)
- Peabody Opera Theatre Orchestra
- Peabody Studio Orchestra
- Peabody Wind Ensemble
- Peabody Jazz Ensemble
- Early Music
- Chamber Music
- Master classes with distinguished faculty and world-renowned guest artists
- Friday Noon:30 Recital Series
- Peabody students are engaged as substitutes in the Baltimore Symphony Orchestra and are also regularly employed by other metropolitan and community orchestras

Conservatory Admissions

1 E. Mount Vernon Place, Baltimore, MD 21202
667-208-6600 peabody.jhu.edu/admissions