

Piano

FACULTY ARTISTS

Marian Hahn

Seth Knopp

Ellen Mack

Benjamin Pasternack

Alexander Shtarkman

Boris Slutsky

Steven Spooner



The piano faculty of the Peabody Conservatory enjoy a reputation of international acclaim.

Its members have played with the world's great orchestras and in recital in the most prestigious halls on five continents. Peabody piano faculty and alumni have won major prizes in such international competitions as the Busoni, Van Cliburn, Montreal, Munich, Naumburg, Palm Beach, Queen Elizabeth, Tchaikovsky, Warsaw, and Young Concert Artists. Graduates enjoy global careers and many combine performing with teaching at prestigious conservatories, colleges, and universities in this country and abroad.

peabody.jhu.edu/piano



Audition Requirements

All students applying for entry into the fall 2021 semester must record all pieces in their entirety according to the repertoire requirements below. For further information on audition procedures for the coming year, please visit: peabody.jhu.edu/auditions.

UNDERGRADUATE

Undergraduate piano applicants must upload a pre-screening video recording to the Peabody application by December 1. The video must include:

- A complete classical sonata
- A romantic work of at least 10 minutes in length
Several shorter works can be combined, such as Brahms Op. 118, Nos. 1-3, or a movement of a large sonata (Chopin, Schumann, etc.)
- One virtuosic etude

Applicants passing the pre-screening will be required to perform at Peabody in person for admission. The required repertoire is:

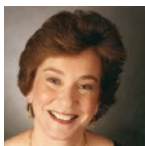
- **Baroque** - a prelude and fugue or any other work containing a fugue by J.S. Bach
- **Classical** - complete sonata by Mozart, Haydn, Beethoven, or Schubert. Mozart's G Major Sonata, K. 283, and Beethoven's Sonata, Op. 49 may not be used to fulfill this requirement.

- **Romantic** - a major solo work by a 19th-century composer
For example, Chopin's Ballade, Scherzo, or Sonata; Brahms' Op. 118 or 119 (complete); Liszt's Dante Sonata, Vallee d'Obermann, or a Hungarian Rhapsody. Note: A Chopin nocturne or etude may not be used to fulfill this requirement.
- **20th Century** - a major solo work
- **Etude** - a virtuoso etude by one of the following composers: Chopin, Liszt, Rachmaninoff, Scriabin, Debussy, Bartok, Ligeti, or Stravinsky
- **TRANSFER STUDENTS ONLY** - Must present one additional virtuosic etude by Chopin, Liszt, Debussy, or Rachmaninoff.

GRADUATE

For graduate audition requirements, please visit peabody.jhu.edu/pianoauditions.

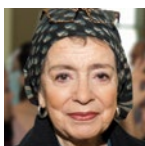
FACULTY ARTISTS



Marian Hahn



Seth Knopp



Ellen Mack



Benjamin
Pasternack



Alexander
Shtarkman



Boris Slutsky



Steven Spooner

Performance Opportunities

- Solo recitals
- Master classes with distinguished faculty and world-renowned guest artists
- Friday Noon:30 Recital Series featuring different departments throughout the semester
- Chamber music
- Pianists may perform in smaller ensembles ranging from early music ensembles to contemporary and computer music ensembles.
- Peabody large ensembles

Conservatory Admissions

1 E. Mount Vernon Place, Baltimore, MD 21202
667-208-6600 peabody.jhu.edu/admissions