

Historical Performance

FACULTY ARTISTS

Tony Arnold
Risa Browder
Mark Cudek
Carl DuPont
Elizabeth Futral
Ah Young Hong
John Moran
Margret Owens
Adam Pearl
Gwyn Roberts
Randall Scarlata
William Sharp
Richard Stone





The Historical Performance Department trains singers and instrumentalists to succeed in today's professional music world.

Graduates emerge in the forefront of today's young Renaissance and Baroque performers, gaining depth, versatility, and professional acumen from the Conservatory's program. Recent alumni have performed with Alkemie, Ayreheart, Apollo's Fire, Chatham Baroque, Chicago's Baroque Band, Folger Consort, Hesperus, Tempesta di Mare, and the Washington Bach Consort.

Our all-performer faculty consists of directors and core members of the Baltimore Consort, Tempesta di Mare, and REBEL.

Peabody is located in Baltimore's historic Mt. Vernon district within the early music rich New York-Philadelphia-Washington corridor.

peabody.jhu.edu/historicalperformance



Audition Requirements

All students applying for entry into the fall 2021 semester must record all pieces in their entirety according to the repertoire requirements below. For further information on audition procedures for the coming year, please visit: peabody.jhu.edu/auditions.

ARCHLUTE

- Two contrasting movements by Giovanni Zamboni
- A movement of 17th century Italian music (Falconieri, e.g.)

BAROQUE LUTE

- Two contrasting movements by Silvius Leopold Weiss
- A movement of 17th-century French lute music (Gaultier, e.g.)

HARPSICHORD

- A work by J. S. Bach
- A work by a French Baroque composer
- A work from the 17th-century
- A work of the applicant's choice

RENAISSANCE LUTE

- A work by John Dowland
- A work by Francesco da Milano
- A work of the applicant's choice

THEORBO

- Two contrasting movements of Robert de Visée
- A movement of 17th-century Italian music (Piccinini, e.g.)

BAROQUE FLUTE

- One movement from a sonata by Bach
- One fantasia for solo flute of G. P. Telemann
- A prelude from one of the solo suites of J. Hotteterre
- A movement from a late 18th-century sonata (past 1750)

BAROQUE OBOE

- A sonata by Handel or Telemann
- A work by a French Baroque composer
- A work of the applicant's choice

RECORDER

- A sonata by Handel or Telemann
- A theme and two variations by van Eyck
- Two movements from a French Baroque suite
- A work of the applicant's choice

BAROQUE CELLO

- Two movements from an unaccompanied Bach suite
- Two contrasting movements from an 18th-century sonata

BAROQUE VIOLA

- Two movements of unaccompanied Bach, either from the violin sonatas and partitas or from the cello suites
- Two contrasting movements from an 18th-century sonata

BAROQUE VIOLIN

- One movement from an unaccompanied Bach sonata or partita or a Telemann fantasy
- Any solo work by a 17th-century composer
- Two contrasting movements from an 18th-century sonata

VIOLA DA GAMBA

- One ricercar from Diego Ortiz *Tratado de Glosas*
- One prolusio from Christopher Simpson *The Division Viol (Part III)*
- Two contrasting movements from an Abel sonata or similar work

VOICE

Requirements follow those of the MM in Voice, except that eight or nine of the required 10 selections must be written before 1800. A Gregorian chant and at least one selection from the Renaissance should be included.

FACULTY ARTISTS



Tony Arnold,
voice



Risa Browder,
Baroque violin and
viola



Mark Cudek,
Renaissance lute



Carl DuPont,
voice



Elizabeth Futral,
voice



Ah Young Hong,
voice



John Moran,
viola da gamba
and Baroque cello

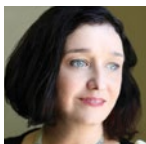
HOWARD GOODMAN



Margaret Owens,
Baroque oboe



Adam Pearl,
harpichord



Gwyn Roberts,
Baroque flute
and recorder

BECKY OEHLERS



Randall Scarlata,
voice



William Sharp,
voice



Richard Stone,
Baroque lute and
theorbo

Performance Opportunities

- Peabody Renaissance Ensemble
- Baltimore Baroque Band
- Peabody Consort
- Recorder Consort
- Viola da Gamba Consort
- Baroque Chamber Ensembles
- Baroque Opera
- Master classes with distinguished faculty and world-renowned guest artists
- Friday Noon:30 Recital Series featuring different departments throughout the semester
- Biweekly departmental performance classes
- Regular community outreach events at churches and synagogues, the Walters Art Museum, etc.

Conservatory Admissions

1 E. Mount Vernon Place, Baltimore, MD 21202
667-208-6600 peabody.jhu.edu/admissions